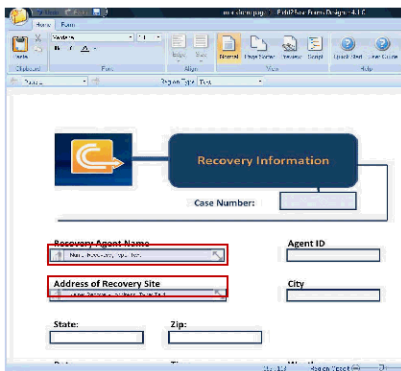
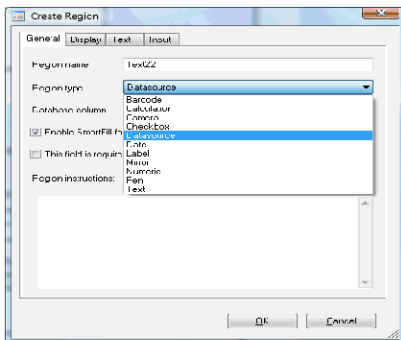




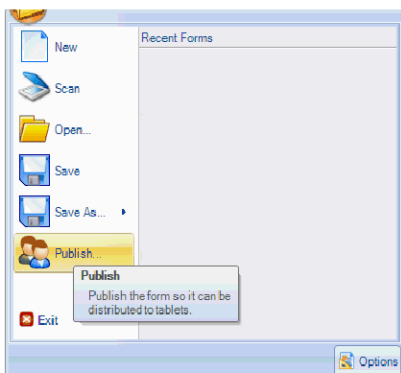
This forms design software tool from Field2Base, gives you a very simple interface to create your field forms. Companies can import their existing forms or create new ones from scratch. Just use your mouse to point click and create.



Forms Designer automatically prepares your forms for data integration into existing back-end systems such as SQL, Oracle, AS-400, CSV, and custom databases for you. Each field region you create in the form is a database table. These regions can also contain business rules so the data being entered in the field is checked for accuracy.



Specifying how the form will interact with the user in the field is a snap with the Forms Designer tool. Simply chose what will happen when a user selects a region on the field. Region types can include Photographs, GPS, Barcodes, Dropdowns, Signature Capture, Handwriting Recognition, Calculations and much more.



Once you complete the design process you can test your form in preview mode to see what the end user experience will be like in the field. Once you have tested the form, simply select “publish”, and you new or updated form will be instantly sent to your user community in the field. The end user is not required to perform any IT task to receive the new or updated form.